

Roberine



# 5-Serie

Roberine.com



# Mowing to the Highest Standard

Roberine is a Dutch manufacturer with a history dating back to 1951. We build mowing machines that provide the highest grass cutting standards for the professional ground keepers of sports fields, parks and public spaces. The Roberine 5 series is available with a flail or cylinder units to provide the highest cutting standard.

## The choice is yours

- F5 flail mower or R5 cylinder mower
- With or without comfort cab
- Cutting width of 75 to 345 cm

# Extremely reliable

The Roberine F5 and R5 are the result of many years of experience in developing and constructing mowers. The 5 series complies with all international requirements (incl. TÜV). In short, it offers the very best in mowing.

## Benefits

- Unrivalled mowing results
- Easy to maintain
- Choice of 6 or 8 blade cylinder jumbo cutting units
- Easily adjustable height of cut (15 to 85 mm)





# Perfect ergonomics, more enjoyable work

You will immediately feel at home when you sit behind the wheel of the 5 series. The controls are easily operated via the ergonomic control arm.

Resulting in less fatigue for the operator during long working days.



## Comprehensive safety

- Cabine with standard LED lighting kit including H7 high-beam spotlights
- Improved lighting with greater reliability
- Brake lights
- Roll bar (ROPS) and seat belt
- Good all-round visibility

## Maximum comfort

- Operating comfort
- Relaxed work posture
- Ergonomically adjustable command arm
- Forward and reverse drive pedals
- Automotive driving in transport mode
- Automatic weight and height adjustment
- Steering wheel adjustable in height and angle
- Very low noise level
- Double driving pedal



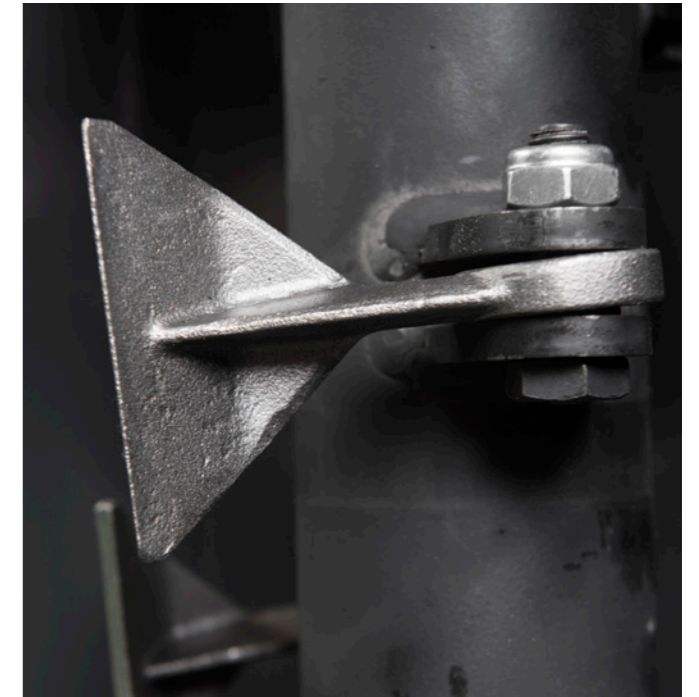
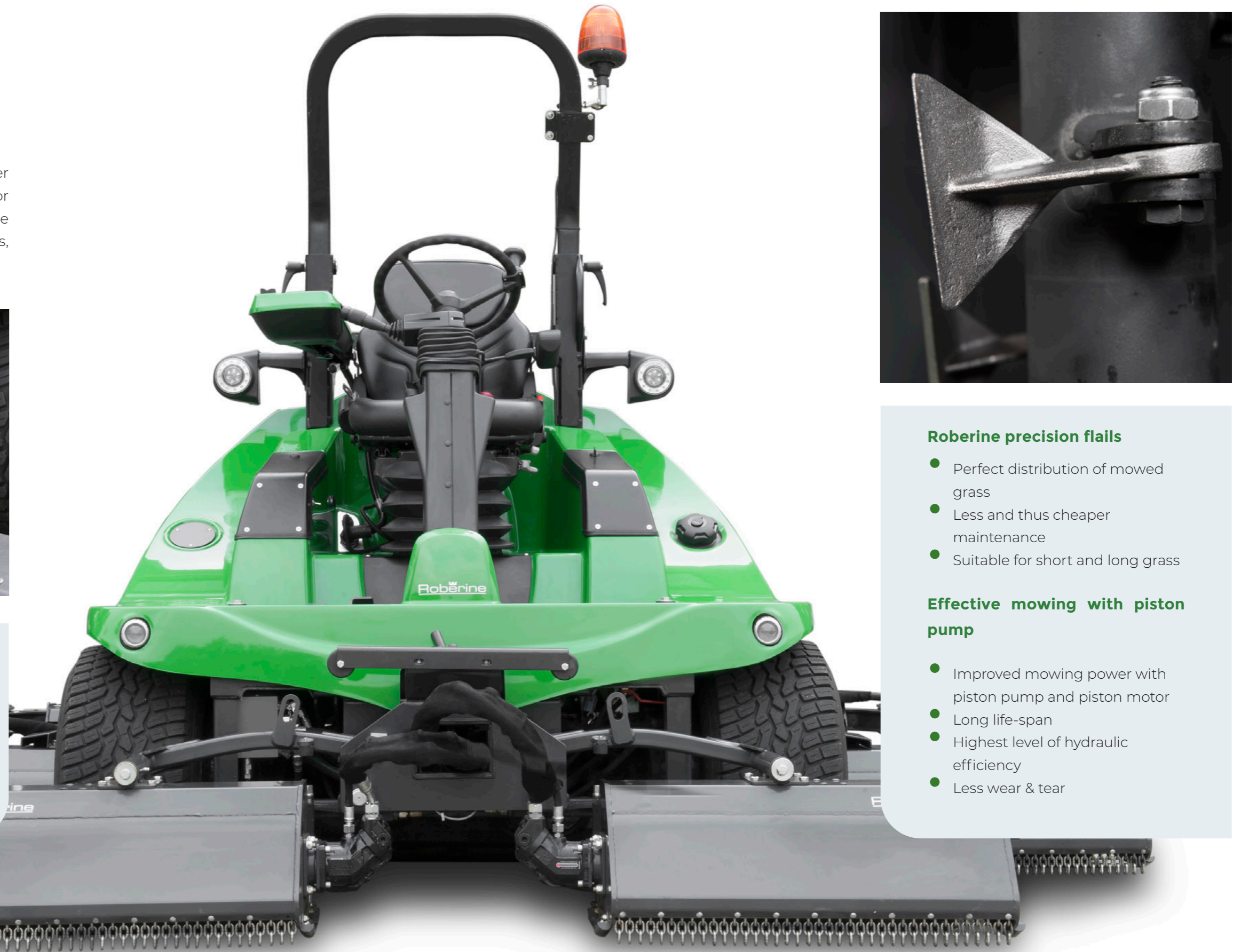
# The ultimate all-rounder

The Robeline F5 is an all-rounder. The flail mower has a robust flail unit, with an effective design for perfect mowing results. The Robeline F5 can be used for a wide range of purposes, including parks, sports fields and grass verges.



## Robust construction

- Easy maintenance
- Strong support arm for the mowing unit
- Excellent accessibility during maintenance



## Robeline precision flails

- Perfect distribution of mowed grass
- Less and thus cheaper maintenance
- Suitable for short and long grass

## Effective mowing with piston pump

- Improved mowing power with piston pump and piston motor
- Long life-span
- Highest level of hydraulic efficiency
- Less wear & tear



# Get inside and you're sold

The 5 series with cabin maximises enjoyment when you work. The cab immediately invites you to get inside. Once you sit behind the wheel, you

will be pleasantly surprised by the headroom and quietness.



## Ideal working climate

- Windscreen wipers with interval setting
- Air conditioning with climate control (optional)
- Radio connection ports

## Comfort cabin with all features

- Extensive ventilation possibilities
- Lighting as standard
- Spacious cabin with a lot of headroom

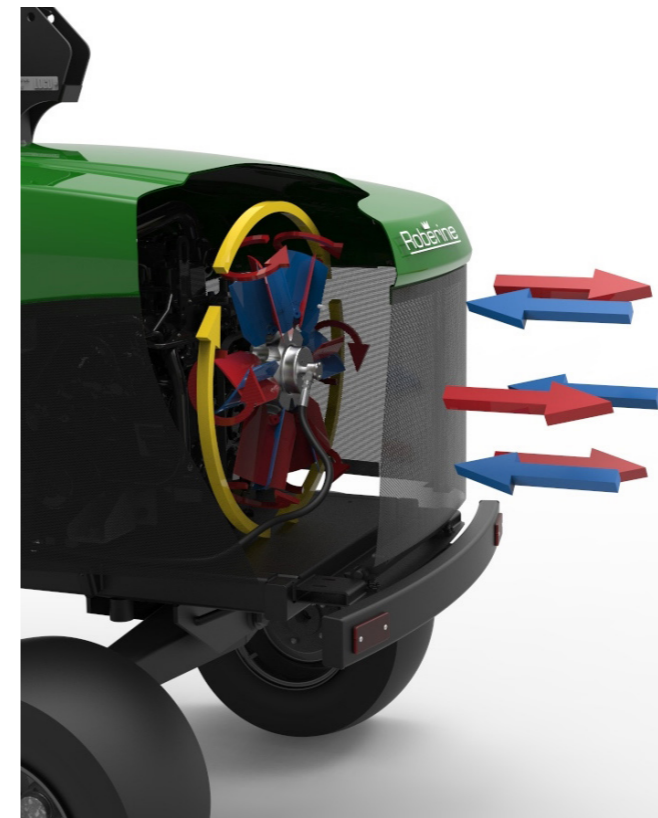
## Maximum Visibility

- Tinted glass, sun visor and 3 mirrors
- Two doors and a hinged rear windscreen
- Excellent view of mowing units and wheels



# Reliable power source

- Yanmar 4 cylinder Turbo Diesel
- 2.0 intercooler
- 2091 CC
- 46 kW/63 HP
- Permanent 4WD
- Reverse-blow radiator fan



## A new approach to maintenance

Machines that deliver top performances day in day out, need maintenance. But we have considered this:

- Easy to access to the engine
- Easy daily maintenance
- Cost-efficient
- 24-hour service via dealer login

## Robust flail head construction

The unique construction of the flail unit allows you to mow close to obstacles, reducing the requirement for additional manual labour such as strimming. The construction also ensures less damage to the machine and other objects.





# Driven by perfection

The latest insights into drive and engine technology were considered when developing the 5 series. The combination between hydrostatic drive and permanent 4WD maximises grip on all surfaces. The robust rear axle follows the surface and thus offers a lot of stability. The electronic weight transfer system helps to realise better results on soft verges.



## Sustainable investment

- Engine development for the future
- Hydrostatic 4-wheel drive
- Very low fuel consumption
- Perfect price/quality ratio



# Specifications 5-series

Engine	
Engine	4 cylinder water cooled Yanmar Turbo Diesel with Intercooler. Stage 5
Power	46kW (63 hp) at 2600 rpm
Capacity	2091 cc
Fuel tank	69 litres according to daily consumption figures
Speed (maximum)	
Mowing	Forwards: 13 km/h Reverse: 9 km/h
Transport speed	Forwards: 25 km/h Reverse: 12 km/h
Traction and drive	
Drive	Automatic hydrostatic four-wheel drive (drive by wire)
Mowing system	2 pieces Axially plunger pumps
Hydraulic tank	55 litre capacity with oil-level glass
Tyres, brakes and steering	
Front tyres	Vredestein Greentrax Turf 320/55 - 12 (26x12-12 8 PR)
Rear tyres	Vredestein Greentrax Turf 250/50 - 10 (20x10-10 6 PR)
Brake system	Maintenance-free hydrostatic brake system
Parking brake	Electrically operated maintenance-free handbrake on the front wheel motors
Steering	Fully hydraulic rear-wheel steering, including adjustable steering column
Seat	
Seat	Standard fully adjustable comfort air-suspended seat with automatic weight adjustment and command arm
Indicators	
Dashbord warning lights	Digital display of all necessary control and warning functions, Ergonomically placed in the Command arm

Weight and dimensions	
Total length	310 cm
Height	Cabine version 226 cm, ROPS version 231 cm
Wheel base	160 cm
Transport width	190 cm
Weight with ROPS	ROPS version including flails units 1960 kg
Weight with cabin	Cabine version including flails units 2168 kg
Certifications F5 and R5	
Certifications	CE Certified according to NEN ISO EN5395 ROPS according to ISO21299
Machine options F5 and R5	
Options	6 or 8 blade cutting cylinders, homologation for the public road with possibility for beacon light, cab with heating and optional Air conditioning, mechanically driven and temperature controlled reversible cooling fan

Mowing units Roberine F5		Mowing units Roberine R5	
Number of mowing units	5 independently suspended flail units fitted with hydraulic plunger motors	Number of mowing units	5 independently suspended cutting cylinder units with hydraulic gear motors
Mowing unit configuration	Flail unit with 12 flails, Ø 25 cm and roller Ø 76 mm	Mowing unit configuration	Jumbo units, 6 or 8 blades, Ø 25 mm and roller 76 mm
Cutting width	Variable from 75 - 345 cm	Cutting width	Variable from 75 - 345 cm
Height settings	25 mm - 85 mm	Height settings	15 mm - 85 mm
Weight transfer system	Electrically operated for more traction by weight transfer of mowing units on the wheels	Weight transfer system	Electrically operated, more traction by weight transfer of mowing units on the wheels
Optional	Floating heads		



# Roberine

## **Roberine**

Industrieweg 18  
4283 GZ, Giessen (NL)  
**T:** +31(0)183 447272  
**E:** [info@roberine.com](mailto:info@roberine.com)  
[www.roberine.com](http://www.roberine.com)



**Roberine.com**