

Roberine



# 302-Serie

[Roberine.com](https://www.roberine.com)

# Mowing at the highest level

## Improved 3-series

Roberine has been the brand for managing sports fields, parks and public green spaces since 1951. With the upgraded Roberine 302 series, the 3-series has undergone severe modernisation. As a result, as a professional, you always mow at the highest level with Roberine. It does not matter whether you choose a flail or cylinder mower.

The Roberine F302 and R302 result from years of experience developing and building mowers. You will experience this craftsmanship as soon as you get on board.

- The latest Stage 5 diesel engine
- Robust construction
- High comfort
- Minimum emissions
- Reinforced support arm at the front of the mowing unit
- Automotive driving: the idle speed at a traffic light
- Cost-efficient: Low fuel consumption of approx. 3.5 l/h
- 24-hour service via dealer login
- Everything can be operated with one hand
- Reversible fan for a full day of optimal mowing



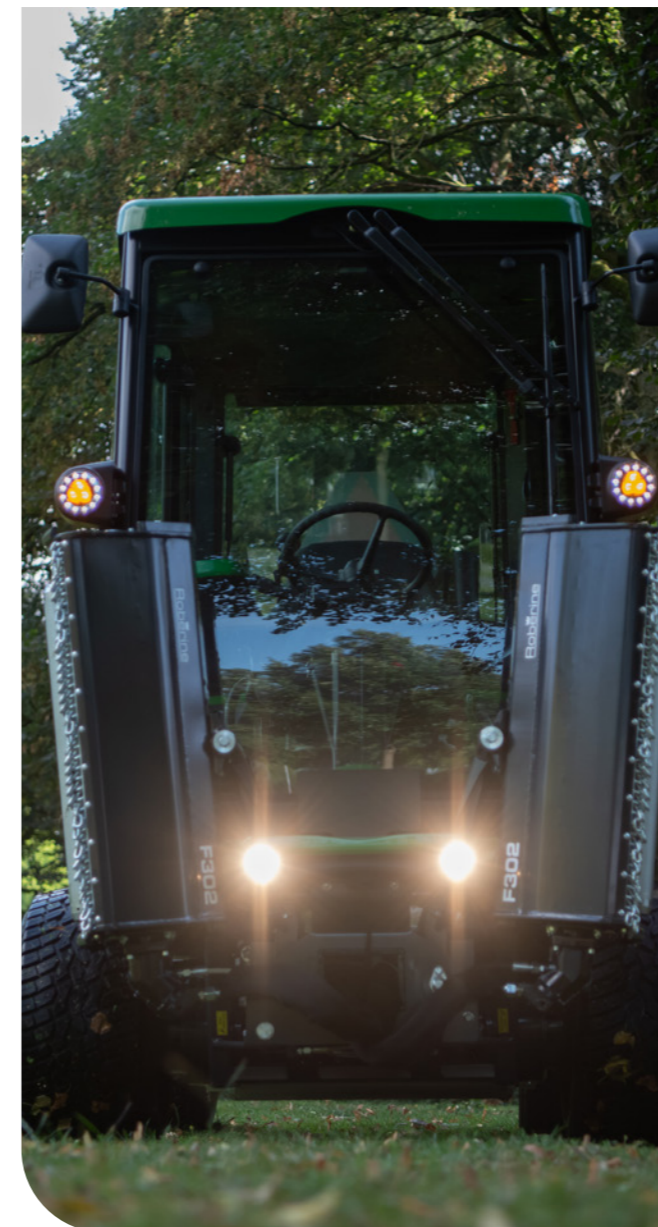
### The latest Stage 5 engine

With a new Stage 5 engine, you comply with the latest emissions regulations. Due to the possibility of driving automotive in ECO mode, you reduce Diesel engine speed. As a result, you have lower fuel consumption and emissions, and the engine makes less noise. Good for the environment, more pleasant work for yourself and those around you.

# Driven by perfection

In developing the improved 3-series, the latest insights in drive and motor technology were used. Automotive driving combined with 4WD ensures a lot of ease of use and maximum grip on any surface. The robust rear axle is terrain-following, which means a lot of stability. The electrically switchable weight transfer system gives a better result on soft soil.

The 302 series is equipped with an electric parking brake that you can operate via the Command Arm. The addition of cruise control with a memory function allows you to mow as efficiently as possible.



## The choice is yours

- Three-piece flail mower F302 or cylinder mower R302
- With or without comfort cabin
- Several transport widths
- Cutting width from 75 to 245 cm
- The possibility for 75 or 90 cm flail units
- Choice of 6 or 8 reel blades

## The perfect groundkeeper

- Perfect mowing pattern
- Easy servicing
- Effortless height adjustment (15 to 75 mm)
- Optimal driving and mowing comfort
- Low noise and vibration level
- Outstanding driving characteristics due to new technology and double brake pedal

# Obstacles, No problem



Due to the unique construction of the mower, you can mow in the most effective way and cause less damage to the machine and objects. With this compact machine, almost any location is accessible to you.

The Roberine Flail Mower is a true all-rounder. The F302 has a precision flail with an optimal design for a perfect mowing pattern. The Roberine F302 can be used widely from parks to sports field, from roadside to waterfront. As a result, the machine has a shorter payback time.

## Safety all around

- Standard LED lighting and H7 floodlights for optimal visibility and less interference
- Brake lights for added safety
- Flashing light for better visibility (optional)
- Rollover bracket (ROPS) and, of course a safety belt
- Optimal view on the mowing units and wheels
- Tilt sensor for more safety (optional)

## Maximum overview

- Tinted glass, sunshade and 3 mirrors
- Two doors and hinged rear window
- Excellent view of the mowing units and wheels

# Optimal ergonomics, more job satisfaction

If you take a seat in a 302 Series machine, you will immediately feel comfortable. The control panel is clear and easy to operate. Right where you expect it to be.

You can operate the comfortable Command Arm with an LCD with one hand so you can work pleasantly. The double drive pedals ensure flawless operation and handling characteristics of the mower. All you have to do is focus on mowing because the machine exactly does what you want.

The 302 series with cabin completes your job satisfaction. The double cabin doors invites you to board immediately. You will be pleasantly surprised by the headspace and the quietness. This gives you a spacious feeling which is reinforced by the broad view around the machine. Due to the improved suspension of the engine by 4 hydraulic dampers, you will suffer less from vibrations in the steering wheel and the driver's seat.

## Optimal working climate

- Relaxed working posture
- Comfortable operator's seat
- Ergonomically adjustable Command Arm with LCD
- Radio preparation and 12-volt connection
- Windscreen wiper with interval
- Comfort cabin equipped with all luxury
- Several ventilation options
- Standard equipped with traffic lighting
- Spacious cabin with plenty of head space
- Air conditioning with climate control



# Excellent maintenance support

The renewed 302 series is not only easily accessible for carrying out maintenance, but Roberine also offers you excellent service when it comes to servicing.

Roberine and its dealer network stand for high service and excellent support. You can expect our ability and expertise in all aspects of service. For example, we have specific diagnostic tools for maintenance, and all our original Roberine parts are of high quality. In addition, you have 24-hour access to the dealer login containing the registered machine information.



## Optimal mowing with the plunger motor

- More mowing power with plunger components
- Long service life
- High productivity and effectiveness
- Less wear and tear
- High hydraulic efficiency

## Transport reinvented

- High ground clearance
- Transport hooks in an quickly accessible place
- Compact dimensions (155cm)
- Low weight
- Easy to modulate driving speed
- Sublime driving characteristics in urban traffic

# Specifications 302-serie

Engine	Yanmar 3TNV86CT turbo diesel: 32,4KW/2700rpm (44 HP), 3 cylinder with DPF - Stage 5.
Cylinder capacity	1568 cc.
Fuel tank	45 litre (enough to work all day)
Speed	Mowing: Forwards: 13km/h ; Reverse 9km/h; Transport speed: Forwards: 25km/h; Reverse 9km/h
<b>Traction, and drive</b>	
Drive	Automatic hydrostatic four-wheel drive (drive by wire)
Mowing system	Hydraulic Axial plunger pump for mowing units
Hydraulic tank	55 litre capacity with oil-level glass
<b>Tyres, brakes and steering</b>	
Front tyres	Vredestein Greentrac Turf 320/55 - 12 (26x12-12 8 PR)
Rear tyres	Vredestein Greentrac Turf 250/50 - 10 (20x10-10 6PR)
Brake system	Maintenance-free hydrostatic brake system
Parking brake	Electrically operated maintenance-free handbrake on the front wheel motors
Steering	Fully hydraulic rear-wheel steering, including adjustable steering column (angle and height)
Seat	Standard fully adjustable comfort air-suspended seat with automatic weight adjustment and Command Arm
LCD Display	Speed, RPM, hydraulic oil and coolant temperature. Language and layout adjustable to your liking. Fuel level, (average) fuel consumption, engine and mowing hours, speed mowing units (adjustable), outdoor temperature, battery voltage and distance. Time, regeneration mode, weight transfer mode, handbrake, Cruise control (optional), mowing position and turn signal. Alerts and alarms. Service and status window. DPF Status and Angle of Inclination Indicator (optional). Adjustable driving characteristics.
Indicators	Hydraulic-oil level gauge

<b>Weight and dimensions</b>	
Mowing width	215 cm (optional on F302 flail mower 245 cm)
Total length	280 cm
Height	234 cm with ROPS / 166 cm with ROPS down / 225 cm with cabin and air conditioning
Wheelbase	145 cm
Transport width	155 cm
Total weight without cabin	1448 kg with ROPS (including bumper and basket)
Total weight without cabin	1685 kg (including bumper and basket) Tool basket: 17 kg / Bumper: 20 kg
Certifications	Certified according to CE machine certification, protection on the front of the front two flail units, ISO 17101-2, certified according to ISO 21299 for ROPS
Options	Rear bumper, luggage carrier, road lighting, LED flashing lamp, cabin with heating and air conditioning, reversing fan, organic hydraulic oil, ejection protection, sunroof, tilt sensor, cruise control, floating heads (on request), protective covers, etc.



## Roberine

Industrieweg 18  
4283 GZ, Giessen (NL)  
**T:** +31(0)183 447272  
**E:** info@roberine.com  
www.roberine.com




# Roberine

## **Roberine**

Industrieweg 18  
4283 GZ, Giessen (NL)  
**T:** +31(0)183 447272  
**E:** info@roberine.com  
www.roberine.com



**Roberine.com**